


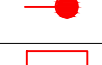
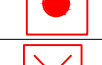


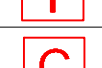
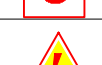






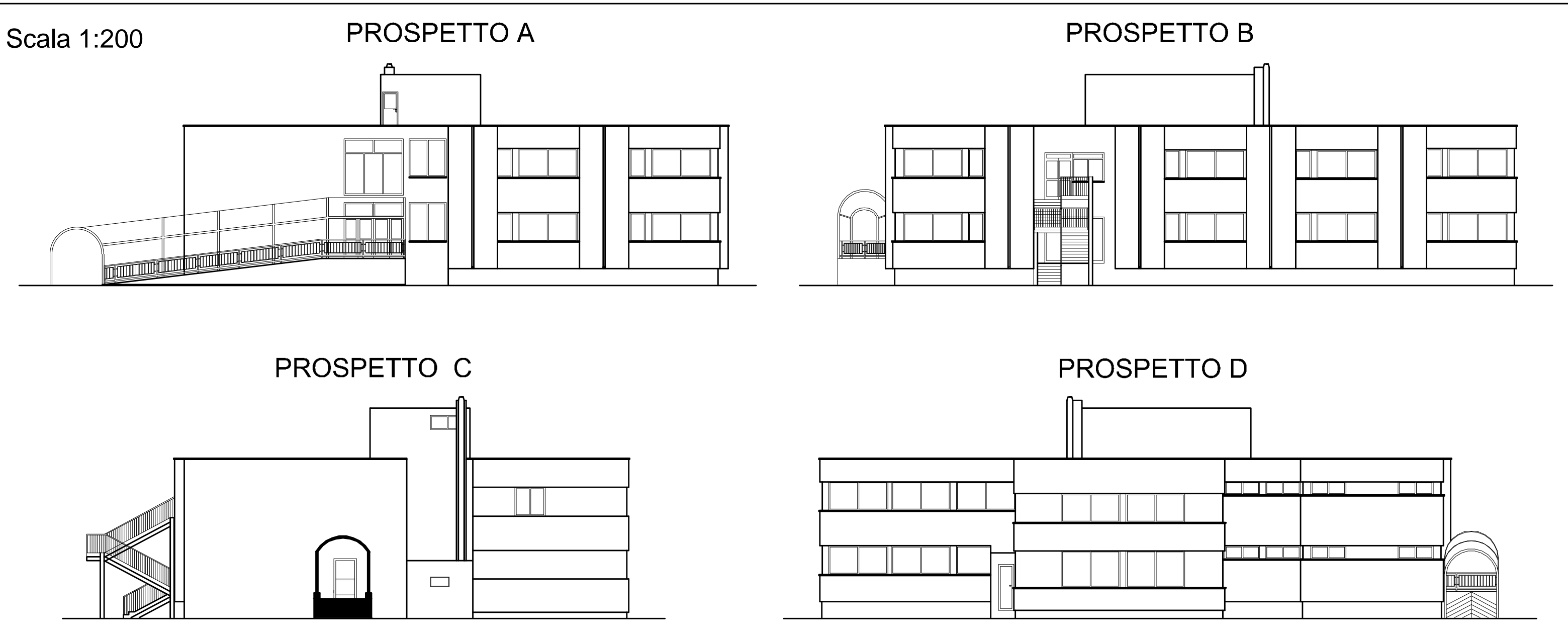
**LEGENDA SIMBOLI ANTINCENDIO**

-  IDRANTE ATTACCO DN 45
-  ESTINTORE PORTATILE A POLVERE
-  ATTACCO DN 70 PER AUTOPOMPA VVF
-  SISTEMI DI SEGNALAZIONI IMPIANTI DI ALLARME
-  LUCI DI SICUREZZA - ILLUMINAZIONE DI EMERGENZA 36 W
-  SEGNALAZIONE ALLARME ANTINCENDIO
-  LEVA A STRAPPO
-  CENTRALINA ANTINCENDIO
-  INTERRUTTORE GENERALE DI CORRENTE
-  QUADRO ELETTRICO PRINCIPALE
-  LUCE DI EMERGENZA CON PITTORGRAMMA USCITA DI EMERGENZA 36 W
-  VIETATO L'ACCESSO AL PERSONALE NON AUTORIZZATO
-  CASSETTA DI MEDICAZIONE

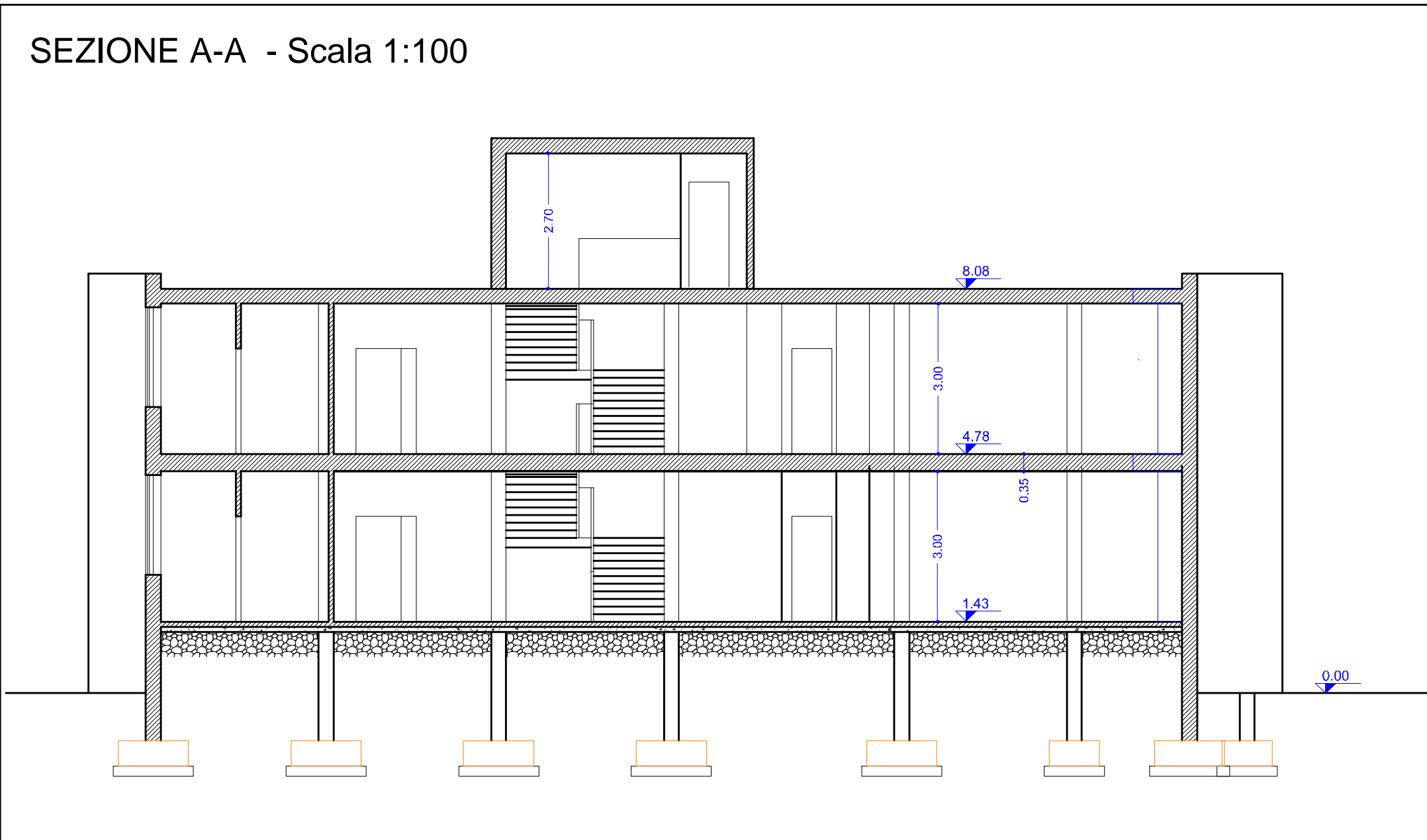


PIANO TERRA - Scala 1:100

Scala 1:200

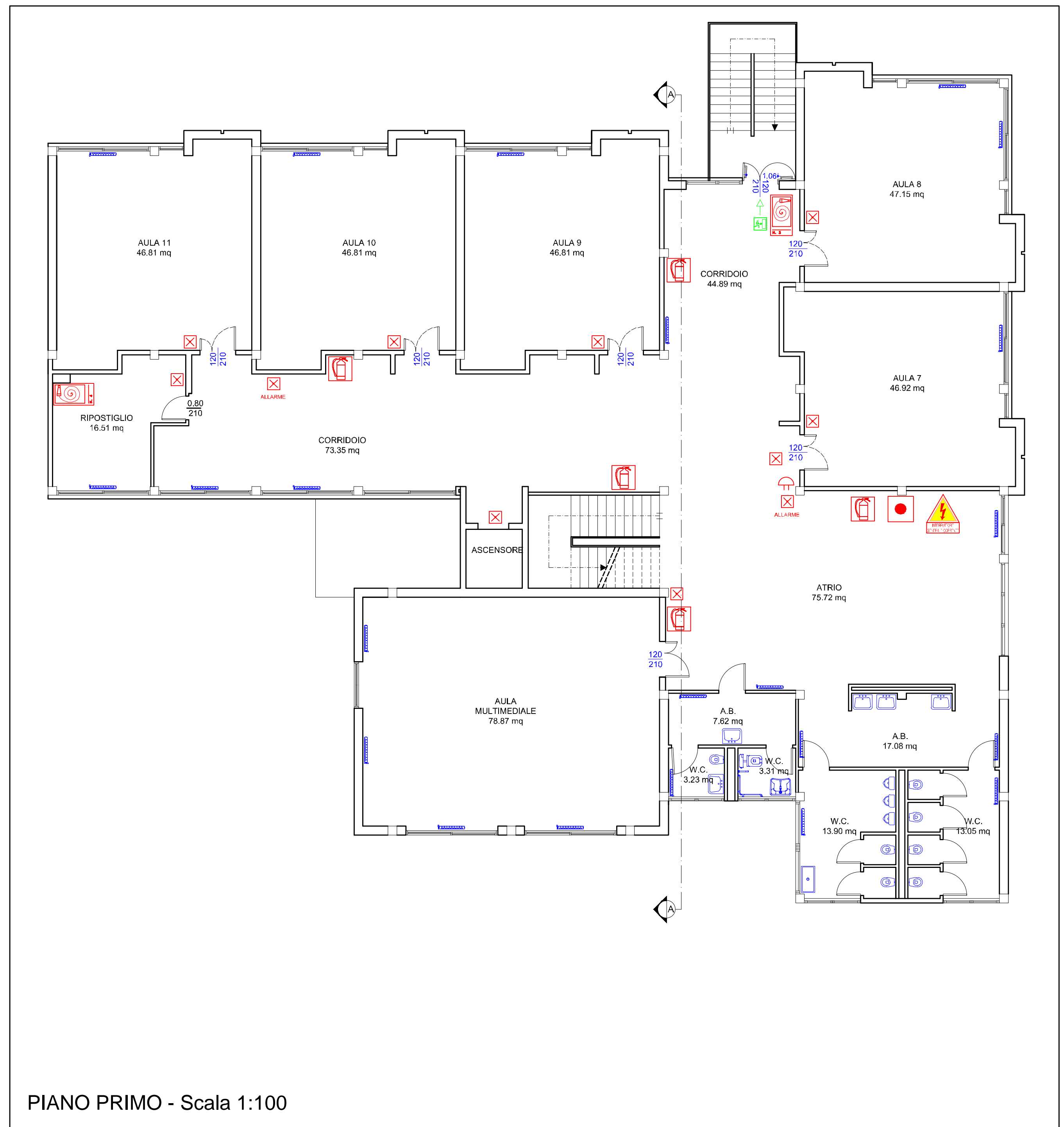


SEZIONE A-A - Scala 1:100

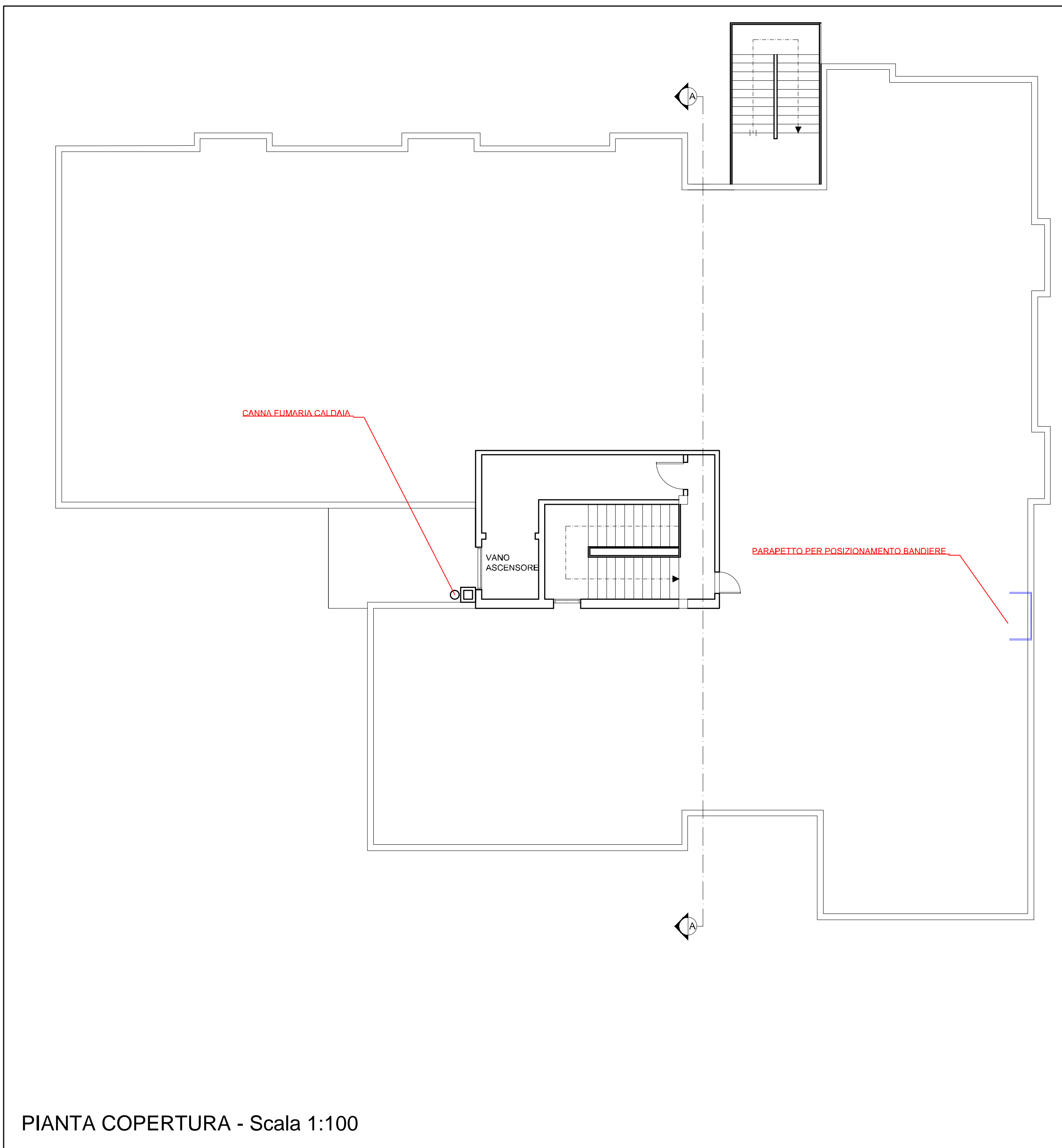


SPAZIO RISERVATO ALL'UFFICIO

<b>STUDIO TECNICO DI INGEGNERIA</b> Dott. Ing. Davide Pusccheddu PROGETTAZIONE CIVILE - GEOMETRIA - CONSULENZA SICUREZZA ANTINCENDIO Sede: Cagliari, Via Roma 101 - Tel. 070/5240000 - Fax 070/5240001 - E-mail: studio@stt.it	
TAVOLA 2	COMUNE DI SELARGIUS Provincia di Cagliari
DATA Ottobre 2016	OGGETTO: - PROGETTO DEFINITIVO / ESECUTIVO - ADEGUAMENTO NORME DI SICUREZZA DELLA SCUOLA ELEMENTARE VIA L. DA VINCI
BOZZA INTERA TAVOLA	LOCALIZZAZIONE: VIA LEONARDO DA VINCI
SCALE varie	ELABORATO: STATO DI FATTO
Progetto Approvato	Committente: COMUNE DI SELARGIUS - AREA 6 LL.PP.
Interventi Successivi	Progettista: Ing. Davide Pusccheddu - CA0441000892 Collaboratore: Ing. Luca Cocco



PIANO PRIMO - Scala 1:100



PIANTA COPERTURA - Scala 1:100